



**WELCOME CLASS
OF 2026
to the Ambridge Area
High School**



2022-2023 SCHOOL YEAR
AMBRIDGE
AREA

Opening Remarks: Dr. Pasquerilla

Superintendent – The Ambridge Area School District



Welcome: Ms. Janice Zupsic

Principal – The Ambridge Area School District



Agenda: Wednesday, August 17, 2022:



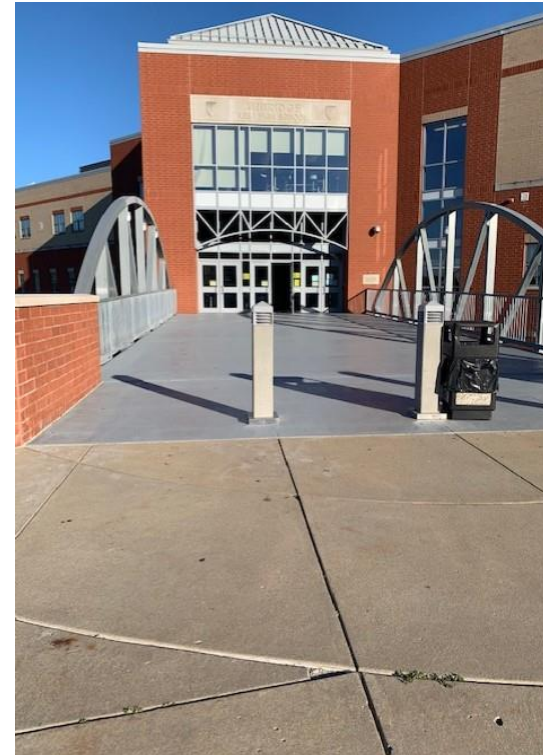
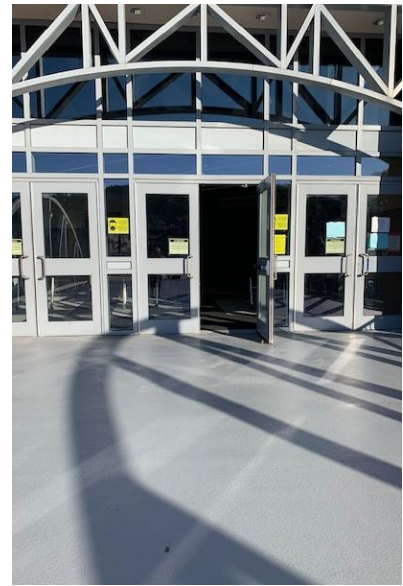
Welcome: Learn of the
Educational Staff, Requirements
and Resources



Attendance, Expectations at the
High School and Questions



Tour and Review Schedule and
Visit Educational Booths



High School Administration:



**Dr. Pasquerilla –
Superintendent of
The Ambridge
Area School
District**

**Please contact Mrs.
June Mueller for an
Appointment:
724-266-2833, ext.
1263**



**Mr. Barry King–
Assistant to the
Superintendent**

**Please contact Mrs.
Rebecca DeMase for an
Appointment:
724-266-2833, ext. 2319**



**Ms. Janice Zupsic
Principal
Ambridge High
School**

**Please contact Mrs.
Guerrieri for an
Appointment:
724-266-2833, ext.
2296**



**Mr. Joseph Lamenza
Assistant Principal
Ambridge High School /
Athletic Director**

**Please contact Mrs.
Rabold for an
Appointment:
724-266-2833, ext. 2380**

High School Secretarial and Administrative Assistants:



Mrs. Renee Guerrieri

724-266-2833, ext. 2296

Administrative Assistance

- **Contact Administration**
- **Graduation**
- **Caps and Gowns**



Mrs. Amy Sipes

724-266-2833, ext. 2335

Front Office Secretary

- **Attendance**
- **Work Permits**
- **Excuses**
- **Early-Late Dismissal**



Mrs. Valerie Misencik

724-266-2833, ext. 2377

Guidance and Foods Service Secretary

- Guidance Questions**
- Contact Counselors / Social Worker / SAP Coordinator**
- **Transcripts**
- **Food Service**



Mrs. Meg Rabold

724-266-2833, ext. 2380

Athletic Director Secretary

- **Athletic Questions / Concerns & Game Locations**
- **Contact Athletic Director**

High School Guidance Counseling Office :



**Ms. Chelsea
Benedict, MA, NCC**

**724-266-2833, ext.
2482**

**9th – 10th Grade
School Counselor**



**Mrs. Mia Gantz,
MA**

**724-266-2833, ext.
2419**

**11th – 12th Grade
School Counselor**



**Mrs. Sarah
Schaffer, MSW**

**724-266-2833,
ext. 2265**

**Highland
Elementary and
High School
Social Worker**



Ms. Laurel Baker

**724-266-2833, ext.
2102**

**Prevention
Specialist
SAP Coordinator**

Arrival and Dismissal: Average School Day

Breakfast: 6:55 AM –
7:25 AM – Check-in
Front Door

Homeroom/1st Period
starts promptly at 7:30
AM

Attendance taken
promptly at 7:30 AM:
Arrive Early

- ✓ Please note: Homeroom and 1st period are the same location, period and teacher
- ✓ Arrive early 7:05 AM
- ✓ 42 minute class periods
- ✓ Nine class periods in a school day
- ✓ Four lunch periods (4, 5, 6, & 7)
- ✓ School ends at 2:26 p.m.
- ✓ Special bell schedules & assemblies



Arrival: Security Protocol / Lockers:

1. All Students are **REQUIRED** to enter through the Front Bridge Entrance at the High School and participate in security protocols.
2. All electronic devices are to be stored in your back pack or purse.
3. All zippers are to be open so that all compartments are visible and accessible to staff.
4. Place bag with open zippers on the table and walk through the metal detectors on entry. .
5. Student arrival and door opening will begin at 7:05 AM.
6. Busses will drop-off students at the Stadium Entrance at the High School and front entrance.
7. Parents will drop-off students at the Front Bridge Entrance at the High School.
8. Parents are required to show ID at Front Check-In when entering.



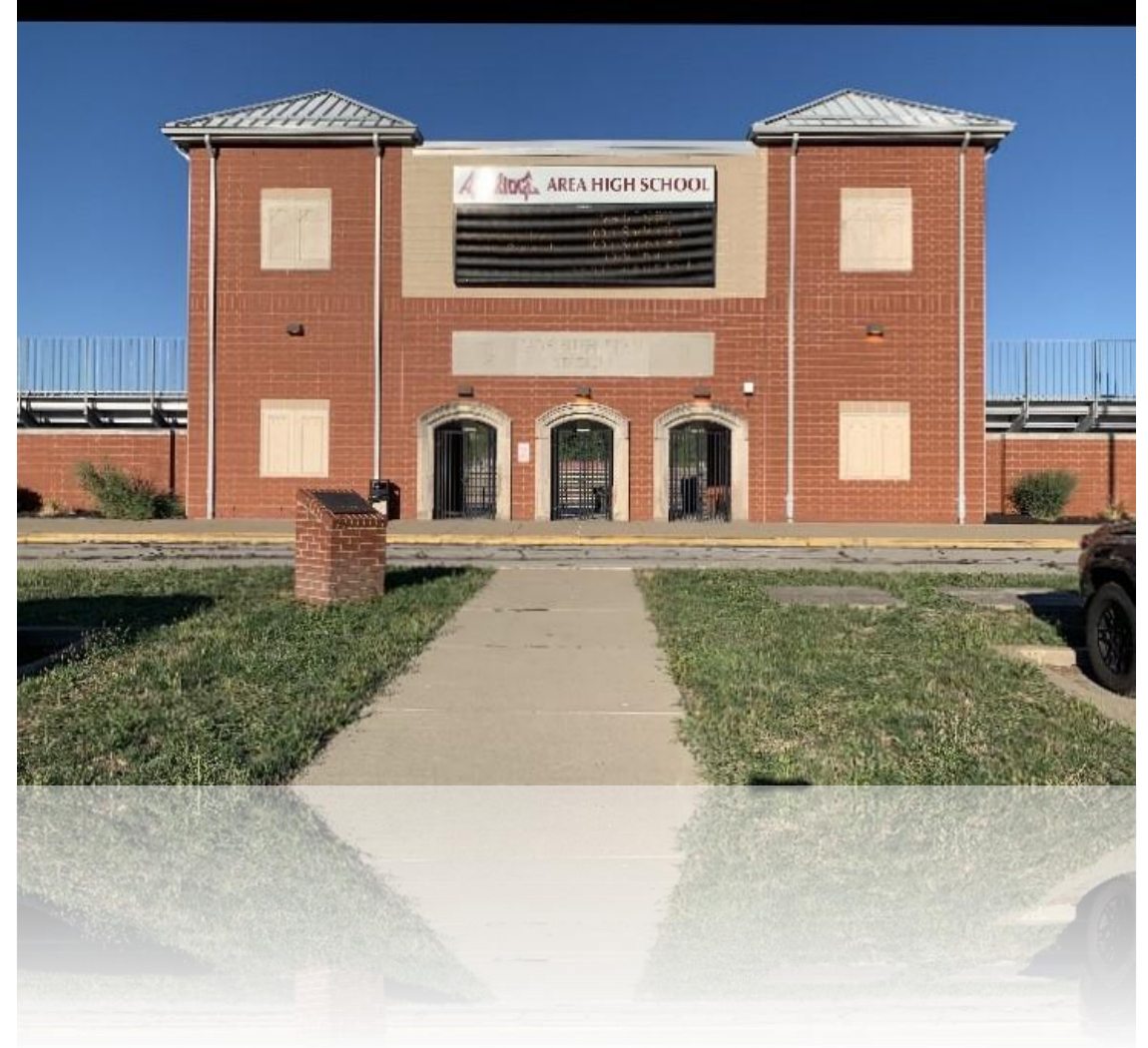
Transportation:

- Rhodes Transit – Provider
- **AM Arrival:** Buses drop off in front of the building on arrival
- **PM Dismissal:** Students will be dismissed at 2:26– All busses are lined up at the Front Entrance of the High School.
- Buses rules are the same as the rules when in school. Discipline infractions will be enforced as per School Approved Policy.
- We are pleased to share all buses are now equipped with cameras and sound systems.



Transportation:

- **Bus Assignments:** Students must ride the bus they are assigned to.
- Any student wishing to ride another bus home or to school on a specific day **are required** to present a written parent note in the morning to the front office in order to receive a temporary bus pass to present to the driver.
- **NO** students will be permitted to ride another bus without a written bus pass.
- Changes to routes and transportation questions:
 - BethAnn Eyrth – (724) 266-2833, x1203
 - Rhodes Bus Company at (724) 266-4322.



School Supplies and Materials:

Required: Please ensure your student has their laptop charged for immediate use on arrival. All materials for academics will be placed on laptops.

1. Please ensure student has their laptop and charger, with laptop charged for immediate use on arrival.
2. Students are permitted to bring a water bottle for water each day. Water bottle adapters have been installed on water fountains for students to refill during the day.
3. Please keep personal items to a minimum to reduce check-in time during morning security protocols.
4. Recommended daily materials list below.

Please keep daily materials to a minimum:
RECOMMENDED DAILY SUPPLIES:

1. Laptop and Charger
2. Water Bottle
3. Books as needed
4. Notebooks/Planners/Binders as per Academic Class
5. Writing Utensils

* Materials can be kept in lockers: Keep lockers locked at all times and do not share with others – All materials in the locker are the responsibility of the student. Do not share combination with others.



Expectations as an Ambridge High School Student:

- ✓ To be on time to school and class.
- ✓ To come prepared and be ready and willing to learn.
- ✓ Respect others and conduct yourself in a proper and polite manner.
- ✓ Treat all others with respect.
- ✓ Follow all school rules and regulations.
- ✓ Seek assistance if you have questions or concerns.
- ✓ Get involved in school activities.
- ✓ Get a great education, have fun, and enjoy the social experience here at Ambridge.



Welcome: Mr. Lamenza

Assistant Principal & Athletic Director – The Ambridge Area School District



AMBRIDGE
AREA

Policies, Procedures and Discipline:

- **Detention** – What can result in detention?
Truancy, Policy Violations.
- Saturday Detention TBD
- Suspension
- After-school activities, dances, and limiting student participation is a direct result of Discipline.
- Dress Code – It is Enforced – Student Handbook
- Please consider when applying for Post-Secondary Education and Careers/Employment discipline is reviewed if a Level III or higher
- **Student Handbook**– Critical to review prior to the first day, be familiar, and understand to ensure a great experience.



Academic Eligibility: Athletics

- **Grades:** Grades and attendance are pulled after 3:00PM Friday via Tyler SIS teams report.
- **Eligibility:** E-mails are sent to principals and coaches on Fridays. Coaches will communicate with the student-athletes and parents about any academic and attendance eligibility issues.
- **Academic requirements:** student-athletes **must be passing four full-credit** classes weekly. If they fail to meet the PIAA requirements- they are out from Sunday through Saturday.
- **Academic semester:** Students must have passed at least four full-credit subjects or the equivalent during the previous semester. **Failure to meet this requirement=ineligibility** 15 school days of the following semester starting on the first day that report cards are issued.
- **Attendance requirements:** Should a student accumulate more than twenty (20) days of unexcused absences the student will be ineligible to participate in athletics (inter-school practice, scrimmage or contest) until the student has been in attendance for a total of forty-five (45) school days following the student's twentieth (20th) day of absence.
- **Attendance semester:** Should a student accumulate twenty (20) days of unexcused absences during the semester, the student will be ineligible until the student has attended for a total of forty-five (45) school days of the following school year.



Academic Eligibility: Athletics and NCAA

- All students are required to maintain Academic Eligibility to remain active in their athletic team
- Please review the Student Handbook for Academic Eligibility
- Final and Spring grades determine Fall Eligibility
- Play a sport at Division I, II, III, and club/participation levels – NCAA website – Make an appointment with Athletic Director to ensure meeting requirements
- Sport Involvement does not Qualify for Health and PE credit at the High School Level – It is required to complete Health and PE credits for graduation in the curriculum.
- Any sports, eligibility and coaching related questions – Required to be directed to the Athletic Director – Contact Mr. Joseph Lamenza at 724-266-2833, ext. 2235



Get Involved:

1. Resume Building
2. Colleges/Universities
3. Involvement with Groups
4. Meet different Peers

During a September Activity Period at the High School, students will have the opportunity to sign up for clubs. Please see the Ambridge Website for all Athletic Schedules

Athletics Include:

B/G Basketball
B/G Cross Country
Football
G/B Soccer
G/B volleyball
Weightlifting
Wrestling
Baseball
Softball
Track & Field
Bridger Belles
Cheerleading
Band Auxiliary
Bowling

Clubs Include:

Interact
Bible
Student Council
Adventurers and Ski Club
Big Brothers/Big Sisters
Thespian Club
Math League
Student Council
Language Clubs
Mock Trial
Science
Robotics
Documentary Film
School Musical
Ecology
GSA
Italian
Spanish
Yearbook
Young Women's Leaders



Signing up or Clubs and Activities at the High School:

- Listen to the announcements at School.
- Pay attention to Activity Periods: Scheduled day and time for meetings – Club / Fair Day – All club sign-ups will be occurring during this time.
- Ask your 1st period teacher and/or Club/Sport Sponsor.
- Please check informational booths for sign-ups after Orientation.



Mrs. Karen Smith – High School Nurse

- You must have a pass to enter the Nurses office
- Health Screenings are Required
- **Please complete and return Emergency Cards / HIPPA Forms***
Any changes to guardianship/address please see the front office / provide any documentation necessary and please make sure any changes: emergency contact / Phone / Guardianship are recorded and on file
- **Medication at school:** Nurse must administer all medications – Please bring a properly labeled container from the pharmacy with original prescription label – Required
- **Exception=**students may carry an inhaler but must inform the nurse.
- All students must have updated immunizations to attend school.

Please call Karen Smith: 724-266-2833 Ext. 2443 with any questions.



Further Information:

For all Policies, Procedures, and Guidelines, please reference the AAHS 2022-2023 Student Handbook and Course of Studies Book which will be available on-line at:

www.ambridge.k12.pa.us

Mrs. Sarah Schaffer

SCHOOL SOCIAL WORKER



AMBRIDGE
AREA

Attendance: How does attendance work at the high school?

- Whether in-person or participating virtually, STUDENTS ARE EXPECTED TO BE PRESENT AND ENGAGED during every class every day.
- Students that are virtual synchronous learning are required to log-in during school hours. Please follow all bell schedules including 2-hr delay and activity periods.
- **ALL STUDENTS MUST BE APPROVED BY ADMINISTRATION FOR SYNCHRONOUS LEARNING. ANY STUDENT THAT IS NOT APPROVED BY ADMINISTRATION WILL BE MARKED TRUANT AND NOT PERMITTED TO LOG-IN VIA SYNCHRONOUS ON-LINE LEARNING.**
- To move through the security line quickly, students should plan to arrive at school as close to 7:00 AM as possible.
- Homeroom attendance is taken at 7:30 am. Please arrive to class promptly.
- If a student has to arrive late or leave early for an approved reason, the student needs to bring a signed parent/guardian note to the front office and sign in late or sign out early. No exceptions.

Attendance: How does attendance work at the high school?

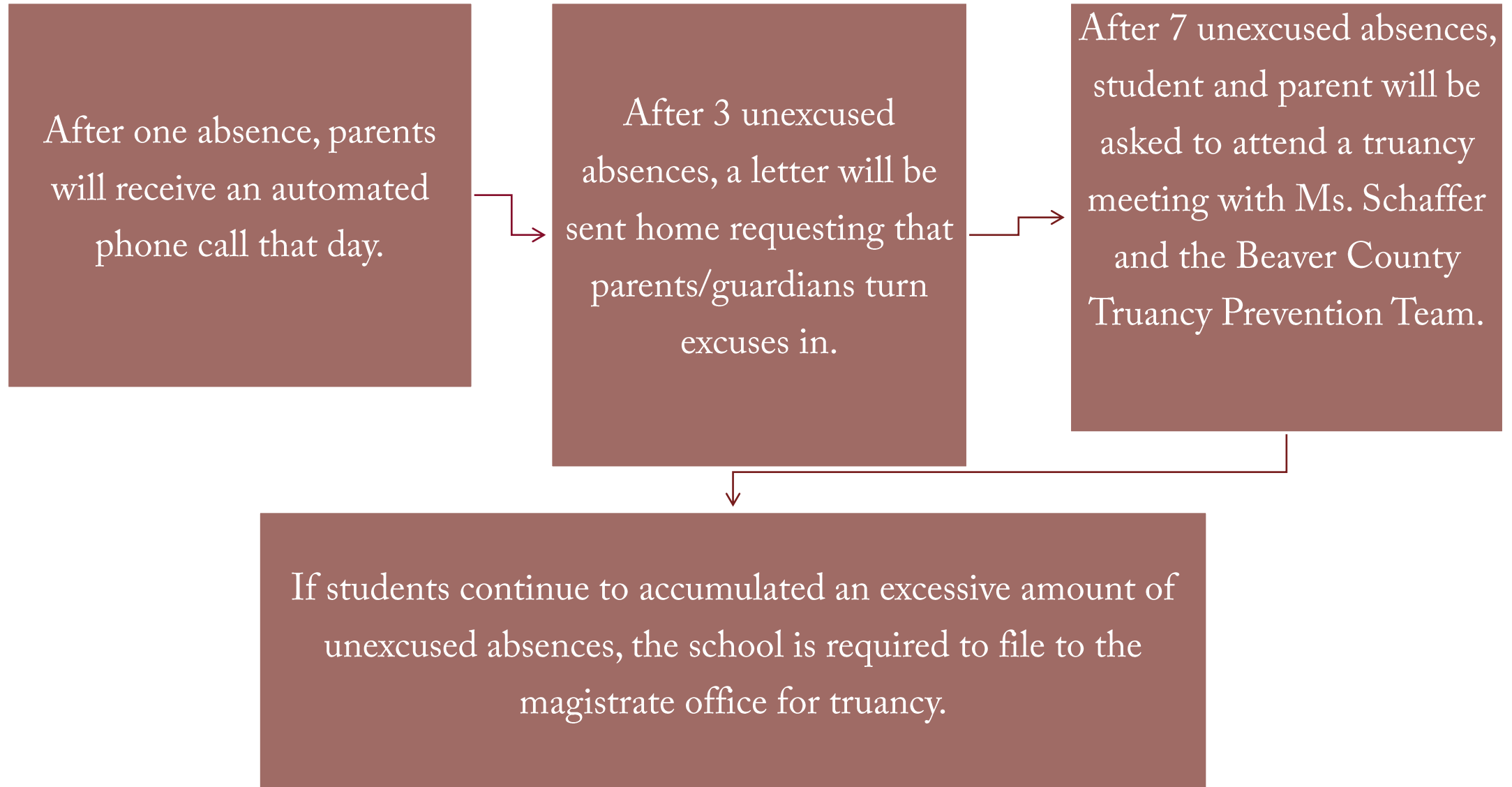
- Parents are permitted 10 excuses per school year.
- Medicals from a doctor or treatment team are **REQUIRED** to have a MEDICAL excuse. If academic work is to be excused Medical, a Medical from a treatment and / or provider is required to be on file. Parent note does not qualify for a medical exemption.
- All excuses should be turned in at the front office to Mrs. Sipes: Phone: 724-266-2833, ext. 2335
- Questions about attendance, student marked absent for a period/day/late call, and/or all attendance questions are to be directed to Mrs. Sipes at 724-266-2833, ext. 2335 And/or will be directed to Ms. Schaffer.
- Parents may also call if a student forgets a note or if a late notice is required for a need to miss school
- Pennsylvania School Code requires that all students ages 6-18 must attend school. **New law requires that schools cannot sign students out at age 17. Required minimum Age 18.**

Potential consequences for absences and lateness:

- Getting behind in school work, feeling “lost” in classes
- Feeling overwhelmed by make-up assignments
- Missing out on activities and opportunities including Dances, Prom, and Sporting Events – Athletic Eligibility and upcoming school year
- Spending time at detention
- Losing privileges at school
- Being suspended, impacting discipline record
- Attending truancy classes
- Being called to school meetings
- Reporting to Court and being responsible for fines (up to \$750!)
- Delaying the ability to get a driver's license / Revocation of a work permit



Attendance Timeline and Excuses:



Beaver County Truancy Prevention Team

- Truancy Defined
- Resources available
- Please contact Ms. Schaffer at 724-266-2833 ext. 2265 or the Beaver County Truancy Prevention Team at if at any point this school year you're struggling to maintain good attendance.

Beaver County Truancy Prevention Team

Erin Clark, 724-624-0825

Jodi Pavilinch, 724-312-7199

Tom Linko, 724-624-1991

Additional Services:

- Continuation of service from the Junior High with Mrs. Haase
- Hold social skills groups with assigned students (weekly, monthly, etc.)
- Additional support for students with IEPs and 504 plans
- Social / Emotional Support

It's a great time for a new beginning! You have a fresh start.

If you are here every day, you are going to succeed!

**Please contact Ms. Sarah Schaffer, School Social Worker
with Questions on Attendance at 724-266-2833, ext. 2265**



Ms. Benedict, MA, NCC 9-10th Grade

School Counselor – The Ambridge Area School District



Points of Interest During Today's Orientation: Please pick up a copy for all directory information

- ☐ **Cafeteria:** Lunch is offered periods 4, 5, 6 and 7
- ☐ **LGI Room 218:** Large Group Instruction Room: Testing, Guidance Classroom Lessons, Club/Activity Meetings
- ☐ **Technology Office Room 223:** Tyler Questions, Computer Issues, Log-In, Teams.
- ☐ **Media Center:** Check-In, Cyber Questions with Coordinators.
- ☐ **Band Room**
- ☐ **Science Floor (Bottom)**
- ☐ **Social Studies Floor (First)**
- ☐ **English Floor (Second)**
- ☐ **Nurses Office:** All Medical Concerns and Medications
- ☐ **Front Office:** Mrs. Sipes – Attendance / Excuses / Work Permits
- ☐ **Mrs. Rabold – Athletics**
- ☐ **Guidance Office:** Mrs. Misencik and Counselors / SAP Coordinator
- ☐ **Principal:** Ms. Zupsic
- ☐ **Assistance Principal and Athletic Director:** Mr. Lamenza
- ☐ **Mrs. Guerrieri – Administrative Assistant**

Points of Interest:

- ❑ Outside of the Guidance office: Bulletin Board for 9-12th Grade News
- ❑ Job Information
- ❑ Intern Information
- ❑ Cyber Bully Form or call 724-266-2833, ext. 2102 to report – Directions in the Freshman Packet Hand-out
- ❑ www.ambridge.k12.pa.us – Services – Guidance and Counseling
 - ❑ Updates on Testing, timelines and information
 - ❑ Scholarships all listed on-line
 - ❑ SAT Fee Waiver



Graduation requirements:



ENGLISH:

4 CREDITS

SOCIAL STUDIES:

4 CREDITS

SCIENCE:

3 or 4 *CREDITS (7 Total of Science/Math)

MATH:

3 or 4* CREDITS (7 Total of Science/Math)

HEALTH AND PE:

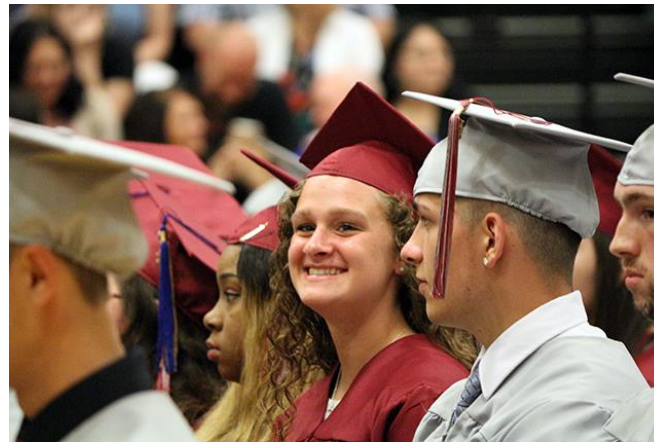
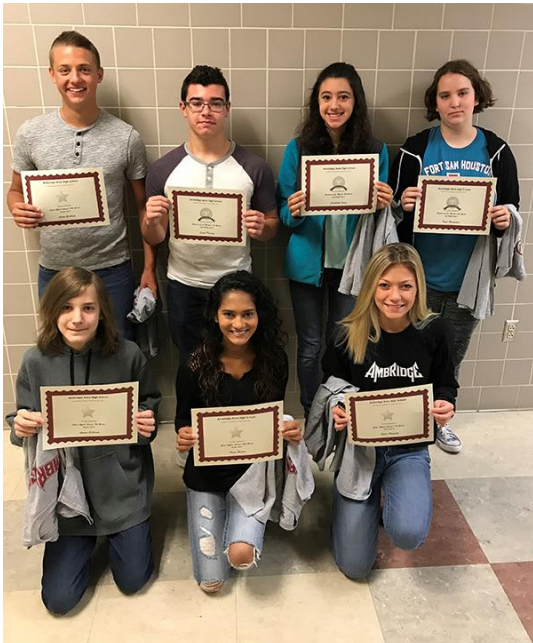
2.0 CREDITS

Total ELECTIVES*:

6.5 CREDITS

Cumulative Project:

1.0 CREDITS



24.5 Total Credits Needed for Graduation

Graduation Requirements:

<u><i>Subject</i></u>	<u><i>Class of 2022-23</i></u>	<u><i>Class of 2023-24</i></u>	<u><i>Class of 2024-25</i></u>	<u><i>Class of 2025-26</i></u>
English	4	4	4	4
Social Studies	4	4	4	4
Mathematics	3 or 4*	3 or 4*	3 or 4*	3 or 4*
Science	3 or 4*	3 or 4*	3 or 4*	3 or 4*
H & P E	2	2	2	2
Freshman Seminar/ Computer Apps/ Tech Ed				
Electives	6.5	6.5	6.5	6.5
Cumulative Career Project	Cumulative Career Project 1.0	Cumulative Career Project 1.0	Cumulative Career Project 1.0	Cumulative Career Project 1.0
<u><i>Total Credits</i></u>	24.5	24.5	24.5	24.5

**Students must achieve at a "Proficient" or "Advanced" level on the Keystone Exam, as required by The Pennsylvania Department of Education, to receive a diploma from Ambridge Area High School. Any student NOT reaching "Proficient" or "Advanced" on either the Keystone Exam or the Keystone retest will be required to show success in an alternate pathway approved by the school district and in Accordance to State Law Act 158.

Requirements for Graduation:

FOUR CREDITS OF ENGLISH and SOCIAL STUDIES:

- Must take an English and Social Studies class:
- 9th, 10th, 11th & 12th grade

SEVEN CREDITS OF MATH and SCIENCE:

- Must take a Math and/or Science: That is either 3.00 credits of Math, and 4.00 credits of Science, or 4.00 credits of Math, and 3.00 credits of Science. We do recommend post-secondary all four years.
- 9th, 10th, 11th & 12th grade

	Credit	Total Earned
Freshman	1.0	1.0
Sophomore	1.0	2.0
Junior	1.0	3.0
Senior	1.0	4.0

	MATH	SCIENCE	Total Earned
Freshman	1.0	1.0	2.0
Sophomore	1.0	1.0	4.0
Junior	1.0	1.0	6.0
Senior		1.0	7.0

CLASSES THAT ARE REQUIRED FOR GRADUATION:

When you receive your schedule: **MUST HAVE THESE COURSES SCHEDULED:**

1. **Social Studies** – American Cultures I / Honors American Cultures I
2. **English** – Practical English 9 / College Prep English / Advanced English 9 / Advanced 10
3. **Science** – Life Science / Biology/ Honors Biology
4. **Math** - Algebra I through Honors Plane / Solid Geometry
5. **Health & PE:** Must Take H & PE All 4 years of High School

* Health and PE I, Health and PE II, Health and PE III, 4th Level PE



ELECTIVES:

36 WEEK ELECTIVE – THE ENTIRE YEAR 1.0 CREDIT

36 week course – Full year in length = 1.0 credit

Will be in class from September to June for 36 week course

1st, 2nd, 3rd, 4th nine-weeks

For Example: Manufacturing Technology I (August – June) 1.00 Credit



18 WEEK ELECTIVE – HALF THE YEAR – 0.5 CREDIT

18 week course September – January or January – June

1st & 2nd 9-weeks or 3rd & 4th 9-weeks

Semester 1: S1 – August / Semester 2: S2 – January

For Example: Art I (August – January) 0.5 Credit

***In order to be in STEEL DRUM I, II or STEEL DRUM, MUST BE IN BAND OR A PERFORMING ART**



HEALTH AND PE REQUIREMENT:

As per School Policy: Sports DO NOT Qualify for

H & PE Credit

Credits cannot be earned over the summer

Classes may be offered at the same time, resulting in the student having Health and PE II prior to Health and PE I.



- Physical Education classes will be conducted and social distancing will be maintained as possible.
- Dress code will be discussed with the academic teacher.
- Physical Education teachers will provide activities that can be done according to their class.
- Required for graduation: Health and PE I, Health and PE II, Health and PE III, PE level IV: Fitness Walking, Team Sports, Racquet Sports, etc.
- Classes can be offered in various order: Health and PE II, Health and PE I, PE IV.
- **Format: Monday – Friday: H & PE I**
 - GYM – Monday, Wednesday, Friday (.3 Credit)
 - HEALTH – Tuesday, Thursday (.2 Credit)
 - Total = 0.5 Credits
- Please contact Davide Sciulli for Cyber Health and PE information: 724-266-2833, ext. 2320

What's on your schedule?

Listed on the Schedule:

- Name
- Period #1 (Homeroom)
- Locker Number
- Combination
- Grade
- Make sure all of your information is correct!!

How to read your schedule?

- Semester 1 (S1)= 1 2 (1st half of year)
- Semester 2 (S2)= 3 4 (2nd half of year)
- Full-Year (FY)= 1 2 3 4 =All Year Course
- You will follow S1 and FY for the first half of
- the year.
- 4 – 9 Week Grading Periods

Please note, all courses requested may not be on your students schedule. Courses are scheduled due to when classes are offered, availability and openings.

Due to demand: The following courses are not offered for the 2022-2023 school Year: TV ATV Studio; Computer Applications; The following courses have specific class size and may not be on the schedule due to available spots: Yearbook I & II, Newspaper I, Graphics Design, Manufacturing Technology I and II, Applied Technical Design with C/ADD, Art I, II and III.

How do I schedule an appointment to make a course correction:

Appropriate Course Correction Changes – Approved

1. Missing a class: Need to add a Social Studies, English, Math, Science or Health and PE
2. Missing a class period / blank class in your schedule: Missing 2nd Period, 2nd Semester
3. Scheduled in the wrong class: Algebra I, should be in Algebra II, 9th grade in a 12th grade class
4. All CORE classes are based off of teacher recommendation. IF requesting to move course, please pick up a course waiver in Guidance. Required to be signed prior to change.
4. Medical Documentation from approved medical provider if medically excused from gym and or change lunch times.

Course Corrections not Approved:

1. I want to be in a class with my friend
2. I do not want Health and PE 1st Period
3. I want a different lunch period and hour
4. I want to change my teacher
5. I do not want any classes 9th period, or a core class first period
6. I changed my mind, and no longer want the elective I chose at the end of last school year – As per administrative letter, all electives were signed and approved. Numbers were due to requested courses.

How do I schedule an appointment to make a course correction:

Please note, all courses requested may not be on your students schedule. Courses are scheduled due to when classes are offered, availability, demands and openings.

Classes may be offered at the same time, resulting in the student choosing another option or elective at that time.

Access Schedule:

1. After signing into the Student Tyler Schedule: Access Schedule
2. Schedules are based on Course Requests, Classes offered and availability of classes

Schedule Changes:

1. Contact Mrs. Misencik, Guidance Secretary, to set-up a virtual appointment or phone call with the appropriate School Counselor to discuss any questions or corrections.
2. Limited Schedule changes will take place during orientation.
3. Please call 724-266-2833, ext. 2377 or e-mail vmisencik@ambridge.k12.pa.us

- 9th and 10th Grade: Ms. Benedict
- 11th and 12th Grade: Mrs. Gantz

Commonly asked questions

QUESTION??

- I didn't get everything on my schedule that I requested and or it changed.
- What if I fail a core class for graduation?
- Can the combination lock on my locker be taken off? I do not have a combination/locker number on my schedule.
- Health and PE Days and Credits are not correct?

ANSWER:

- Many courses are full. You will have an opportunity to take these courses as an 10th, 11th or 12th grader. Schedules will be changed ONLY if you are missing a major subject. Master schedule changes.
- Must take the class in an approved credit recovery program at a fee. This is done through summer/cyber credit recovery. Please ensure you are taking the necessary steps to pass the class.
- Please see Mrs. Misencik in Guidance. No, combination locks that are already on your locker CANNOT be removed.
- MWF- PE TR-Health Class = 0.50 Credits

Grading Terms:

Please contact the Academic Teacher First with academic questions/concerns/grade and assignment questions.

TUTORING: ARRANGE A TIME FROM 2:30 PM – 3:00 PM FOR ADDITIONAL HELP.

- Grading: Every 9-weeks a student will receive a grade.
- Final grades are based on the average of all 4 final grades of the 9-weeks. i.e. A, B, A, A = Final Grade A – Cumulative $1^{\text{st}} / 2^{\text{nd}} / 3^{\text{rd}} / 4^{\text{th}} = \text{Final Grade}$
- 9 –week grading Schedule:
 - Semester 1 (1^{st} and 2^{nd} nine-weeks)
 - Semester 2 (3^{rd} and 4^{th} nine-weeks)
- Electives:
 - .5 Credit – 1 Semester (August – January) i.e. Art I
 - .5 Credit – 2 Semester (January – June) i.e. Art I
 - 1.00 – Full Year (Semester 1 and Semester 2) i.e. BAND
- Students will ONLY receive credit for 60% and Above.

<u>Letter Grade</u>	<u>Percentage</u>	<u>Quality Points</u>
A	90% – to – 100%	4.0
B	80% – to – 89%	3.0
C	70% – to – 79%	2.0
D	60% – to – 69%	1.0
E	0 – to – 59 %	0.0

Grading Terms:

- **WEIGHTED COURSES** -- A student must earn an "A," "B," or "C" grade to receive the additional weighted value. A student who receives a "D" will obtain the credit value for the course but not the weighted value. The following is an outline of courses that have additional weight.
- Weighted GPA will be calculated in two steps. The first step is to calculate a "Non-Weighted GPA" on a 4.0 scale. Once this GPA is calculated, an add-on factor for "Advanced Placement" and "Honors" combined with the Non-Weighted GPA in the following manner. All course weight is assigned by course, not by grade level.

<i>AP / Dual Enrollment</i>	<i>Add On Factor</i>	<i>Honors</i>	<i>Add On Factor</i>
A	.50	A	.25
B	.40	B	.18
C	.30	C	.10
D	No Weight Assigned	D	No Weight Assigned
E	No Weight Assigned	E	No Weight Assigned

The following is a listing of the weighted courses:

Advanced Placement Biology
Advanced Placement Calculus AB
Advanced Placement Calculus BC
Advanced Placement Computer Science A-JAVA
Advanced Placement Computer Science Principles
Advanced Placement Literature and Composition

Italian III
Italian IV
Italian V
Spanish III
Spanish IV
Spanish V

Mrs. Gantz, MA, 11th & 12th Grade Counselor

School Counselor – The Ambridge Area School District



When to Seek Assistance from Teachers:

1. **AFTER SCHOOL TUTORING:** Teachers are available from 2:30 – 3:00 PM at an arranged time for academic tutoring. Please discuss and contact the teacher of record directly for specific times. Guidance cannot assign a teacher for tutoring. They are your best resource for academic help!
2. **Grades:** Questions about assignments, grades, missing work: Please report to the teacher on what assignments, grades and missing work is still needed. They are the best resource to discuss work in the classroom.
3. **Tests:** Upcoming test deadlines, extra time, and concerns about the classwork. They can come up with solutions to help learn in their classroom!
4. **IEP or 504 Accommodations:** Speak to the teacher directly on questions or concerns, and any additional support you may need! They are there to help!
5. **Grading Policy/Extensions/Points:** If they are willing to accept assignments due to extenuating circumstances. Teachers implement their late policy in the classroom and will determine deadlines/extensions/points.
6. **Adding a class to Microsoft Teams:** ONLY Teachers add classes and Teams to Microsoft Teams Calendar. Please contact the teacher directly if you do not see a class on your teams Calendar. If unsuccessful, please submit a HELPDESK ticket. Guidance is unable to add Microsoft Teams or Classes to the Calendar.



A Full Teacher Director and e-mails are listed at www.ambridge.k12.pa.us

When to Seek Assistance from Administration:

1. **Academic Teaching / Personnel questions:** Please speak to a member of administration (Principal, Assistance Principal, Special Education Director) if questions arise of academic grading policies, implementation of teaching in the classroom, school personnel / teaching questions/concerns, change of teaching arrangements.
2. **Cyber Coordinator:** Questions about Edgenuity classes, grading timelines, classes that may need open or extended please speak to the Cyber Coordinator. Guidance is unable to change timelines in Edgenuity.
3. **Discipline:** Any matters related to discipline and policies – Detention, In-School policies or violations of any matter. Teacher referral discipline questions.
4. **Policies and Procedures:** Questions on school policies or procedures.
5. **Athletic Eligibility:** Athletic Director
6. **IEP Implementation / 504 Implementation Concerns:** Special Education Director / Case Manager

Principal: Ms. Janice Zupsic, Principal 724.266.2833 x2287 or via e-mail:
jzupsic@ambridge.k12.pa.us

Special Education Director: Dr. Amy Filipowski 724.266.2833 x 1219 or via e-mail:
afilipowski@ambridge.k12.pa.us



When to Seek Assistance from the Technology Office:

1. **Microsoft Teams:** Student's calendar is not working.
2. **E-Mail/Tyler/Sign-in:** Any matters related to Tyler, Student Log-in and ID, please contact the HelpDesk Directly.
3. **Computer related issues:** Hard-drive Error / Cracked Screen / Monitor will not turn on or off / Unable to Log into the classroom (Teacher then Technology Office).
4. **Schoology:** If already contacted the academic teacher and Schoology is not working, please contact the HelpDesk Directly.
5. Any computer related issues, concerns, student and parent log-in questions, and network ID questions are to be directed to the Technology Office.

Technology HelpDesk: 724-266-2833, ext. 4357

Technology E-mail: helpdesk@ambridge.k12.pa.us

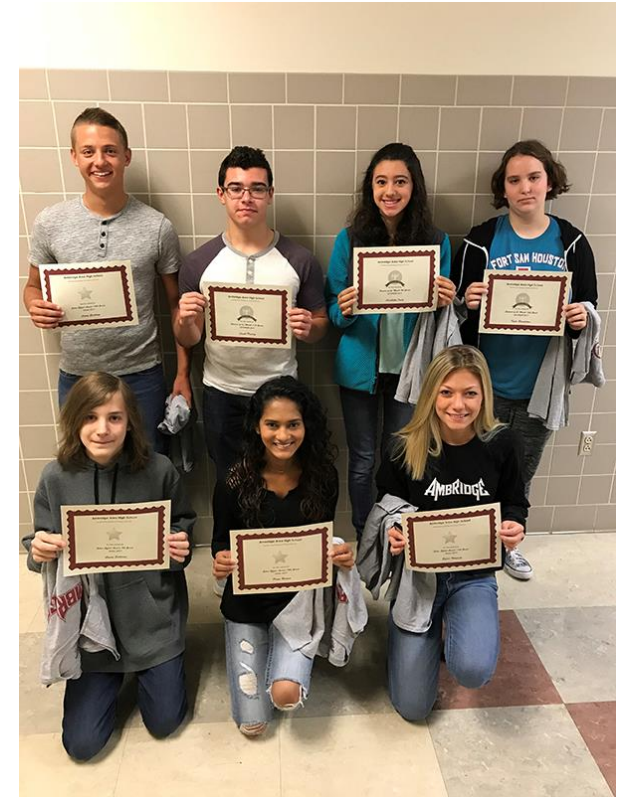
Technology Director: Foster Crawford 724-266-2833, ext. 2318



When to Seek Assistance from the School Counseling Office:

1. **Schedules:** Scheduling Questions and Concerns
 2. **Testing:** SAT, ACT, PSAT, ASVAB – Paying for the Cost of an Exam: Financial Assistance is available for the SAT – Please see the Junior and Senior Level Counselor for an SAT Waiver
 3. **Student Support** – Academic, Social/Emotional, College and Career Readiness / SAP Program
 4. Failure letters will be sent each grading period
 5. **Referrals:** School Counseling Office and Additional Program
Referrals: HELP team, TIPS, WPPC Positive Steps, Prevention Network
- REQUIRED:** You must check in with your teacher and obtain a pass from your teacher to obtain a school pass to see a school counselor!

Guidance Secretary: Mrs. Misencik: 724-266-2833, ext. 2377 or via e-mail: vmisencik@ambridge.k12.pa.us



Future Outlook: Day One Counts

1. **AP Classes: Advanced Placement** – Credit is dependent on end of Course AP Exam – Please refer to the credit policy for each College and University
2. **Dual Enrollment** – Credit is dependent on transcript and grade-based achievement at end of year. Please refer to the credit policy for each College and University. Please see a full list of Dual Enrollment classes in the Student Handbook
3. **CCBC Academics** – www.ccbc.edu **CCBC Dual Enrollment Academies: 11th & 12th Grade:** Aviation: Air Traffic Controller / Professional Pilot / Drones Aerospace Management / CCBC's STEM Academic / Engineering / Process Technology / CCBC's Health Academy: Nursing / Radiologic Technology / CCBC's Criminal Justice Program. Check in with a representative.
4. **BCCTC: 10th Grade** Cosmetology; **11th grade** – Welding, HVAC, Graphics Arts / Business Information Systems, etc. Please check with the representative booth after the presentation.



TECHNOLOGY DEPARTMENT: Network Username and Password

Help Desk: 724-266-2833, ext. 4357

Laptops will be issued the first week of school in Homeroom/1st Period.

Please be sure the acceptable use policy and/or insurance form is filled in if opting for insurance.

Any cyber questions for cyber academy can be directed to the cyber coordinators:

724-266-2833, ext. 2320



Network Account

Grades K-12

AASD Network (Ambridge Domain)

This account allows the students to log into Windows on any computer in the AASD. This is our standard login. The **username** is always the year the student graduates, the first two letters of the first name, plus the full last name, plus the last two digits of their student ID. The default **password** is capital A, lowercase a, the 6-digit Student ID, and an exclamation point !

Example:

Username: 22basmith34

Password: Aa221234!

TECHNOLOGY DEPARTMENT: Network Username and Password

Help Desk: 724-266-2833, ext. 4357

Username and Password: All K-12 students will have a network account on our server. All student network accounts follow the same pattern.

USERNAME:

1. The first two characters are the intended graduation year (this could possibly change year to year).
2. The next two characters are the first two letters of the student's first name.
3. The next string of characters is the student's entire last name.
4. The last two characters are the last two digits of the student ID number.

PASSWORD:

1. The Default Password is CAPITAL A, lowercase a, the 6-digit STUDENT ID, and an exclamation point!



Network Account

Grades K-12

AASD Network (Ambridge Domain)

This account allows the students to log into Windows on any computer in the AASD. This is our standard login. The **username** is always the year the student graduates, the first two letters of the first name, plus the full last name, plus the last two digits of their student ID. The default **password** is capital A, lowercase a, the 6-digit Student ID, and an exclamation point !

Example:

Username: 22basmith34

Password: Aa221234!

TECHNOLOGY DEPARTMENT: STUDENT EMAIL ADDRESS

Help Desk: 724-266-2833, ext. 4357

All K-12 students will have an e-mail network account on our server. All student network accounts follow the same pattern.

STRONGLY RECOMMEND: UPDATES FROM GUIDANCE/TEACHERS/SCHOOLS

All student email addresses follow the same pattern.

1. The first two characters are the intended graduation year.
2. The next two characters are the first two letters of the student's first name.
3. The next string of characters is the student's entire last name.
4. The last two characters are the last two digits of the student ID number.
5. The student email address is the student's network username followed by the student email domain (@ambridgearea.org).

SAMPLE

Graduation Year: 2022

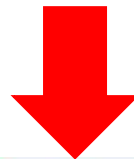
Name: Lori Heim

Student ID: 221234

Network Username: 22loheim34

Student Email Address:

22loheim34@ambridgearea.org



TECHNOLOGY DEPARTMENT: TYLER 360 SYSTEM

Help Desk: 724-266-2833, ext. 4357

All K-12 students will have an account to access the Tyler 360 portal. The username for the Tyler 360 Portal is the student email address. The student email address is the student's network username followed by the student email domain (@ambridgearea.org).

All student email addresses follow the same pattern. The first two characters are the intended graduation year. The next two characters are the first two letters of the student's first name. The next string of characters is the student's entire last name. The last two characters are the last two digits of the student ID number.

The password for the Tyler 360 portal will be the student ID number. The students will be prompted to change it when they log into the system. We recommend that they change it to their network login password. This is the password they use for almost all of the programs in the Ambridge Area School District.



Tyler

Grades K-12

[https://tyler.ambridge.k12.pa.us/TSI Live 360](https://tyler.ambridge.k12.pa.us/TSI_Live_360)

Tyler is our Student Information System. The portal is called Tyler 360. Tyler 360 will show the students their grades, attendance, assignments, documents and more. The username for students to log into Tyler 360 is their district email address. The password is their student ID number. The student can change this password. We recommend that the student reset the password to their network password. The account can be unlocked or reset at any time by contacting the helpdesk.

Example:

Username: 22basmith34@ambridgearea.org

Password: 221234

TECHNOLOGY DEPARTMENT: PARENT TYLER 360 SYSTEM

Help Desk: 724-266-2833, ext. 4357

1. Parents Access to Tyler 360 – This will allow parents to review attendance, grades, classes and assignments related to your students academics.
2. Parent or Guardian Username and Password:
 1. All primary contacts will have an account to access the Tyler 360 portal. The username for the Tyler 360 PARENT Portal is the parent's first name and last name separated by a period.
 2. For example, if my name is Bob Smith, then my username is bob.smith in the Tyler 360 portal. If there is a duplicate contact name or user in the database, the username may be followed by a "1". For example, bob.smith1.
 3. The password for the Tyler 360 portal will be your oldest child's 6-digit student ID number. Once you log in for the first time, the system will prompt you to change it. We recommend that you change it to something you can remember

To begin using the portal:

Visit the Tyler SIS 360 web page:

https://tyler.ambridge.k12.pa.us/TSI_Live_360

or through the mobile app. Log in with your username and password.

SAMPLE

Parent Name: Bob Smith

Oldest Childs 6-Digit Student ID:
123456

Network Username: bob.smith

Password: 123456

TECHNOLOGY DEPARTMENT: TYLER 360 SYSTEM

Help Desk: 724-266-2833, ext. 4357

Technology Assistance Support: If you have any questions about your Tyler 360 student account, or problems logging on to the portal, you can stop in Room 223 at the High School. If you are not in the High School, you can send an email to tylersis@ambridge.k12.pa.us.

You may also call our helpdesk at 724-266-2833 x4357. Please include your first and last name, grade, and building along with the issue you are having.

Technology Team Informational Booth outside the Hallway. Please ensure can log-in prior to leaving!

E-Mail a HELP DESK TICKET:

helpdesk@ambridge.k12.pa.us

First Name, Last Name of Student, Grade Level, Building and Issue that you are having – Please be as detailed as possible. Return E-mail and Number. Any screen pictures are recommended.

Technology Assistance Support: Microsoft Teams: Please contact the Teacher of Record directly to be added to a TEAM or TEAMS on the student calendar. If continued issues, please call the HELP DESK.

Ms. Laurel Baker, SAP Coordinator



SAP Coordinator (Student Assistance Program):

- **THE PREVENTION NETWORK:** Work with the Student Assistance Program (SAP) to help identify students who are experiencing: Barriers to their learning and success in and out of school
- Offers support to those students, and their families, to help them overcome these barriers. As a SAP team member, I will work with you and your student to access services at school and in your community if you or your child is having troubling in or out of school with the following concerns including, but not limited to:
 - Sudden or continued withdraw from family or friends; No longer has the same friend/friends;
 - Depressed; Talking about suicide/self-harm;
 - Acting aggressive; Defying authority at school and home;
 - Lying; Sudden drop in grades; Poor school attendance; Experimenting with drugs or alcohol; breaking rules; conflict; relational abuse/bullying/harassment.
 - I can also assist in connecting you and your child with services if you have experienced a death of a loved one, grief/loss, divorce, separation, re-location and social/emotional and academic concerns that impede learning.
 - Homelessness / Need help accessing Resources

If you need assistance, and/or would like to sign your student up for our SAP team services, please visit my area after the orientation, e-mail: or call directly at 724-266-2833, ext. 2102. I am proud to announce that I will be working at the High School Guidance office 5 days a week to support you and your student!

PLEASE VISIT THE FOLLOWING SPEAKERS OUTSIDE THE AUDITORIUM:

- **TRUANCY INTERVENTION PROGRAM (TIPS) THROUGH BEAVER COUNTY CHILDREN AND YOUTH:** The TIP program is a pre-emptive program designed to seek the root causality of truancy before the school is required to file citations with the local magistrate. That is accomplished by having group or individual meetings with students and/or parents to identify reasons for missing or being late. In that we are representing Beaver County CYS and Juvenile Services we can recommend services that we may have available without actually being a CYS or JSD client.
- **THE PREVENTION NETWORK: Prevention Program:** The Prevention Program works in collaboration and manages the SAP (Student Assistance Program) which is a process for identifying students who are experiencing barriers to learning and success in school. SAP works together to help your student overcome barriers with the goal to help your student succeed academically, socially and emotionally. The prevention team can meet with your student to help set-up academic meetings and to review current and future progress in the classroom.
- **PRESSLEY RIDGE AND THE HELP TEAM:** The HELP team helps assist, stabilize and link families to required supports by working side-by-side in and outside the home and community. Students also can be enrolled in their Drug and Alcohol program with provided supports from the HELP team. Students and families wishing to evaluate their needs in and out of the home.

PLEASE VISIT THE FOLLOWING SPEAKERS OUTSIDE THE AUDITORIUM:

- **AMBRIDGE AREA FEDERAL CREDIT UNION:** Open every Wednesday / Conveniently located in the building / Incentives for grades, report cards and banking for student opportunities in collaboration with Ambridge Area High School.
- **WESTERN PA PSYCH CARE AND COUNSELING (WPPC) POSITIVE STEPS:** At WPPC, they are committed to providing the highest quality mental health care to children, adults and families. Treatment is provided in a manner that respects the inherent value of every person. During Sessions in-school, the primary therapist will be emphasizing psycho-education and strategies.

Referral Reasons: ADHD, Anxiety Disorders, Depression, Truancy, Bullying, Anger/Frustration

Behaviors of Concerns: Difficulty making friends, school avoidance/refusal, frequent school discipline

Referrals Made by: Parent / Self Referral / Teacher or guidance counselor

Individual/group and family counseling available during the School Day

Automatic transfer from the Highland Positive Step Program

PLEASE VISIT THE FOLLOWING SPEAKERS OUTSIDE THE AUDITORIUM:

- **CCBC DUAL ENROLLMENT PROGRAM:** Earn Collegiate Credit in their Academies and Programs while in High School – Explore the world of Air Traffic Control, Pilot, STEM, Health and Allied Nursing Programs, Construction
- **BEAVER COUNTY CAREER AND TECHNOLOGY CENTER (BCCTC):** Earn Certification while in High School – 10th Grade Programs Start – Cosmetology & 11th Grade Programs Start – Welding, HVAC Heating and Cooling, Graphics Arts, Business Information Systems, etc.
- **AMBRIDGE AREA:** STUDENT COUNCIL, CHEERLEADING/CHEER, MUSICAL, TRACK AND FIELD, TENNIS AND MANY MORE!
- **AND MANY MORE WONDERFUL PROGRAMS FOR YOU AND YOUR STUDENT!**

**NEXT EVENT: OPEN HOUSE: SEPTEMBER 28, 2022
6 – 8 PM**

**Please begin your tour and visit, and we look forward to a
wonderful school year!**